

THE CHAMBER VIEW

A monthly newsletter published by the Lebanon Area Chamber of Commerce

PO Box 97 - Lebanon, NH 03766 Phone: 603-448-1203 Fax: 603-448-6489
email: lebanonchamber@lebanonchamber.com www.lebanonchamber.com

Business of the Year

The Business of the year for 2011 has been a pillar of the Upper Valley Community since it was founded in 1932. Originally housed in the homestead on Mascoma Street the Building was bequeathed to Lebanon for the creation of a cottage hospital. It opened its doors with nine beds, one day nurse, and one night nurse. It specialized in births, minor medical procedures and tonsillectomies.

Today it is one of the thirteen Critical Access Hospitals in New Hampshire. At its core is the commitment to provide top quality, highly personalized medical care. Yet this non-profit institution remains one of the most efficient health care organizations in New Hampshire offering patients the second lowest costs in the state. As a leader in children's oral health and a generous supporter of other community services, the institution helps meet the needs of the many citizens in the region who cannot afford to pay for their care.

With 553 employees it is one of the largest employers in the Upper Valley. More than 100 skilled physicians provide services in over 20 specialties. While a strong focus is primary care the institution offers great breadth and depth in its services, which includes and award winning birthing center as well as palliative care for those near the end of life or facing serious illness.

But the institution is more than a health care facility. An increasing older population inspired the trustees to create an independent and assisted-living retirement community on the campus. With on site medical services and a special unit for those requiring 24 hour nursing care. Harvest Hill immediately met an important need in the community. Fourteen years later, The Woodlands at Harvest Hill opened as an independent living facility adjacent to Harvest Hill.

It was with great pride that the Lebanon Area Chamber of Commerce awarded its 2011 Business of the Year Award to Alice Peck Day Memorial Hospital



Points of Interest

- *Service Link an Aging & disability Resource Center's goal is to help strengthen and expand local support for family members caring for older relative so they can remain at home as long as possible. On January 5th at 9:30 AM a proposed training program will be unveiled to help caregivers cope with aging relatives. Phone (603) 448-4498 for more details.*
- *Jon Blatchford, Sales Associate for Lang McLaughry Commercial, announces the recent lease between Triton Realty Corporation, the owner/operator of The Glen Road Plaza and*
- *MGM Movies Game Music Outlet. The new video rental and retail store will rent, buy and sell movies, music and games.*
- *The Small Business Administration is offering free consultation services for New Hampshire Business Owners.*

Points of Interest continued page 3

Citizen of the Year:

The Chamber's 2011 Citizen of the Year grew up in Lyme N.H. He studied cell biology and development at Harvard. In 1965 he volunteered for the Southern Christian Leadership Conference begun by Martin Luther King Jr. After receiving his PHD in his field, he realized that community organizing was much more important to him than science.

He moved back to the Upper Valley and became an outreach worker for Southeastern Vermont Community Action offering individual counseling and organizing community dinners for low income individuals. In 1983 a survey of his clients showed that housing was their biggest problem, so he began volunteering with Twin Pines Cooperative Housing Agency. He organized volunteers who spent thousand of hours over two years on a property the agency purchased to house low income clients.

In the 1980s, he became the Town of Hartford's housing person. They purchased a building in downtown and Christian Street and rehab them into subsidized housing. In 1995 he became the executive director of the Lebanon Housing Authority. His first focus was to begin a weekly mentoring program through Dart-

mouth's tucker Foundation. The program now in existence for 11 years, mentors children so that they make a significant change in school grades and attendance.



He has served on the board of Directors for a number of non-profits that include the N.H. Community Loan Fund, Board of Directors of COVER Home Repair and The Recover Store, Board of Directors of The Haven, Scholarship Committee for NHHAC and the board of Trustees of Twin Pine Housing Trust. For the past 25 years he has served as the team leader for a community dinner team that serves low income families on a weekly basis.

For this and more, The Lebanon Area Chamber of Commerce is privileged to award its 2011 Citizen of the Year to Jonathan Chaffee.

Lebanon Area Chamber of Commerce 603-448-1203

President & CEO — Paul Boucher
Office Manager — Donna Stumpf
lebanonchamber@lebanonchamber.com

BOARD OF DIRECTORS

Chairman of the Board: Drew Nelson (2014)
Board and Basket
Shopnow@boardandbasket.com

First Vice President: Charlene Ashley (2013)
Lang, McLaughry & Spera
charlene.ashley@lmsre.com

Second Vice President:
Mary Gulbrandsen (2014)

Leddy Group
mgulbrandsen@leddygroup.com

Secretary/Treasurer: Debbie Carter (2015)
Mascota Savings Bank
debbie.carter@mascomabank.com

DIRECTORS

Sheila Rook (2013)
Lake Sunapee Bank
srook@lakesunbank.com

Kristina Withington (2015)
A Fireside Inn & Suites
info@afiresideinn.com

Curt Jacques (2015)
West Lebanon Supply
curt@westlebanonsupply.com

Dan Nash (2014)
Advanced Geomatics & Design
advancedgeomatics@comcast.net

Rich Wallace (2014)
Valley News
rwallace@vnews.com

Bob Bauman (2014)
Timken Aerospace
robert.bauman@timken.com

Melanie Moore (2015)
Alice Peck Day Memorial Hospital
moorem@apdmh.org

Jennifer Petersson (2015)
jenniferuvh@myfairpoint.net

Bob Jackman (2013)
LaValley Building Supply
rjackman@lavalleys.com

Matthew Houde (2013)
DHMC
Matthew.s.houde@hitchcock.org

Tim McNamara (2013)
Dartmouth College
Timothy.j.mcnamara@dartmouth.edu

Greg Lewis
City Manager

Revised October 7, 2011

PrintOrderNet

ORDERING PRINT HAS FINALLY BEEN MADE EASY. REALLY.

- ▶ Convenient online ordering 24-7.
- ▶ Options for papers, inks & finishing.
- ▶ Instant pricing.
- ▶ Speedy delivery.

PLUS the same quality
printing - all from your
local printer!



Whitman Communications, Inc.
10 Water Street • Lebanon, NH 03766 • (603) 448-2600 • PrintOrderNet@Whitman.biz

www.whitman.biz

Printing brochures, stationery, booklets, post cards, newsletters,
marketing materials, & more in the Upper Valley for over 40 years.

Profile Members

Members contributing
over \$1,000 annually.

All Lebanon Area Chamber of
Commerce members are eligible for
Profile Member status.



Points of Interest

Continued from page 1

They will be held at their office at 25 Capitol Street 3rd Concord NH from 9:30 AM to 11 AM. No appointment is necessary. The next session is December 29, 2011

- Upper Valley Educators Institute will be hold an information Session about UVEI's certification program for teachers, principals and school leaders. The event is January 18th from 4:30-6 pm. Phone (603) 678-4888 for more details.
- Save your pennies!!! In conjunction with Collette Tours, Milne Travel and the Lebanon Area Chamber of Commerce a Discover Tuscany Trip is planned for November 4th through November 13th 2012. Highlights include Rome, Assisi, Siena, Florence a Winery Tour and a Tuscan Feast. More information to come.

Calendar of Events

November 25 through December 30 AVA Annual Holiday Sale and Echibition.

October 8, 2011 through March 11, 2012. Native American Art at Dartmouth College's Hood Museum of Art.

Winter Swing Sessions January 12, 19, & 26 Learn ballroom dancing at all levels, sponsored by the Lebanon Recreation Department. Call (603) 448-5121 for details

On-site Fitness Evaluation or Fitness On the Go Sponsored by The Carter Community Building Association. Set up times for your employees by calling Larry Ruffing Fitness Director at (603) 448-7477 ext 105.

Shrine Lights continue through New Years at the LaSalette Shrine on Route #4 in Enfield. Lights go on at 5:00 pm until 9:00 pm

UPCOMING EVENTS

March 16, 17,18th 2012 34th Annual HomeLife Show, Leverone Field House Hanover. The event is co-sponsored by the Hanover and Lebanon Area Chambers of Commerce. Applications for the show to be mailed to chamber members and previous exhibitors by the first week of January.

Lang + McLaughry + Commercial

Greater Lebanon and The Upper Valley Area's Leading Commercial Real Estate Brokerage



Bruce M. Waters
Senior Commercial Broker
Bruce.Waters@LMSRE.com



Jon Blatchford
Commercial Associate
Jon.Blatchford@LMSRE.com

603/298-8904 or
www.LMSRE.com

RECENT ACTIVITY

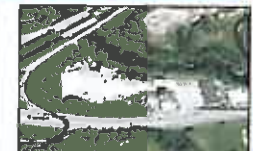


Glen Road Plaza West Lebanon, NH
M*C*M Movies Game Music Outlet recently opened between the Country Cobbler and Cantore's Pizza.

AVAILABLE OPPORTUNITIES



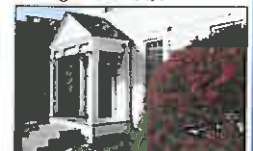
Dartmouth College Highway (Route 4)
Stand alone office/production building. 1,445± SF plus cold loading dock storage area. Great visibility - GC zone. \$12.50/SF NNN.



Next to Maplefield Convenience Store Mechanic Street - Lebanon
2,400± SF with overhead garage door and outdoor storage. \$12.00/SF NNN.



443 Miracle Mile
1,205± SF of retail/service office. Good visibility and great parking. \$14.00/SF NNN.



77 Bank Street
2nd floor office - ready to be moved into - \$18.00/SF all inclusive.



Garage Bay Space
Plaza Heights - West Lebanon
1,600 - 4,000± SF. Oversize doors with loading dock. \$8.00/SF plus utilities.



Route 12-A District
Office or re-use - GC zone.
1,800± SF - \$12.00/SF NNN.





Lebanon Area Chamber of Commerce

At the Crossroads of New England

The Chamber View
PO Box 97, Lebanon, NH 03768



In This Issue

- Citizen of the Year
- Business of the Year
- Learn Ballroom Dancing

Lebanon College

Meeting the educational needs of business and healthcare industries while providing an excellent environment for working adults

Professional Programs, Certifications, CEU and Workforce Training in:

- Management
- Accounting
- Computer Science
- Microsoft IT Academy
- Leadership Workshops
- Education
- Criminal Justice
- Healthcare
- Writing
- Science
- Graphic Design
- Photography
- & More!

15 Hanover Street, Lebanon, NH
Tel. (603) 448-2445
888 LEB COLL
www.lebanoncollege.edu



Mascoma Savings Bank

Serving the Community

— since 1899 —

At Mascoma Savings Bank, we strive to meet all your banking needs with knowledge, insight and a warm smile—whether it's for personal checking or a new business loan, a home mortgage or investment services. As a locally owned, independent bank, we're flexible and responsive. We take great pride in putting you first—every day, in every way.

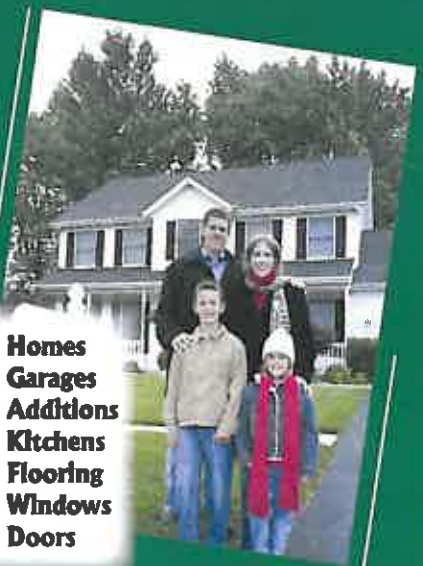
888.627.2662



www.mascomabank.com

LaValley BUILDING SUPPLY, INC.

Building Solution Providers.



- Homes
- Garages
- Additions
- Kitchens
- Flooring
- Windows
- Doors

1-800-LaValleys • www.lavalloys.com